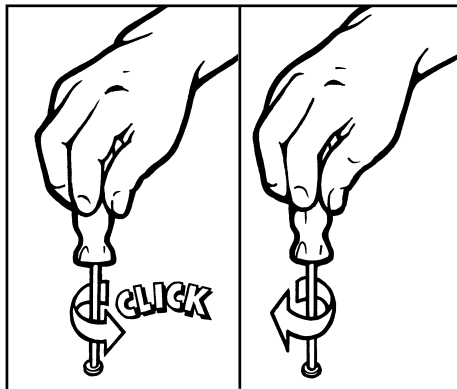
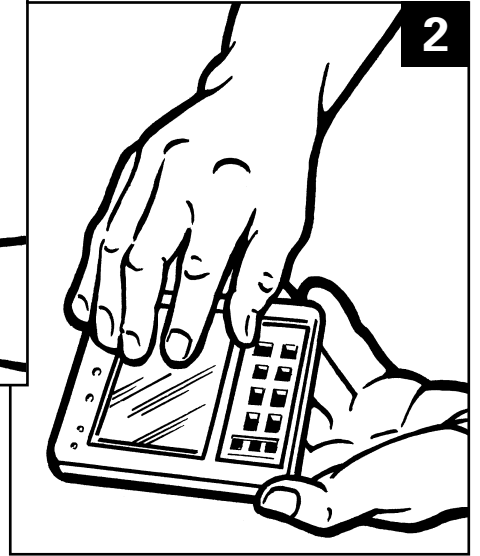
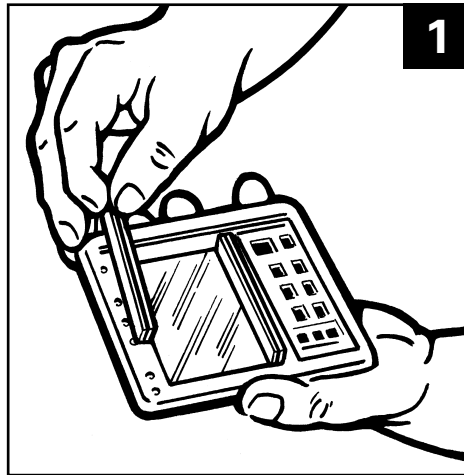


LCD Replacement

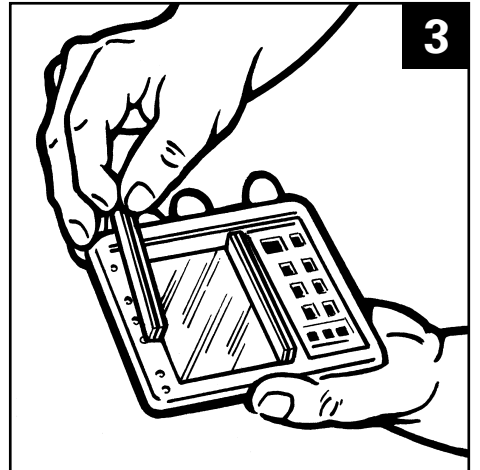
Tools Required:

Phillips head screwdriver

1. Remove rubber elastomers.
2. Remove LCD screen. Note orientation of screen prior to removal and ensure replacement is the same.
3. Replace elastomer strips (no adhesive required). See illustration 1.
4. Replace circuit board.



When replacing screws first turn anticlockwise to locate in thread and then proceed to tighten clockwise.



Note: There are two types of LCDs used in the PM2. The difference can be seen where the batteries are drawn onto the circuit board. If the word enhanced PMII is written you will need part PN1416, if not part PN1405.

